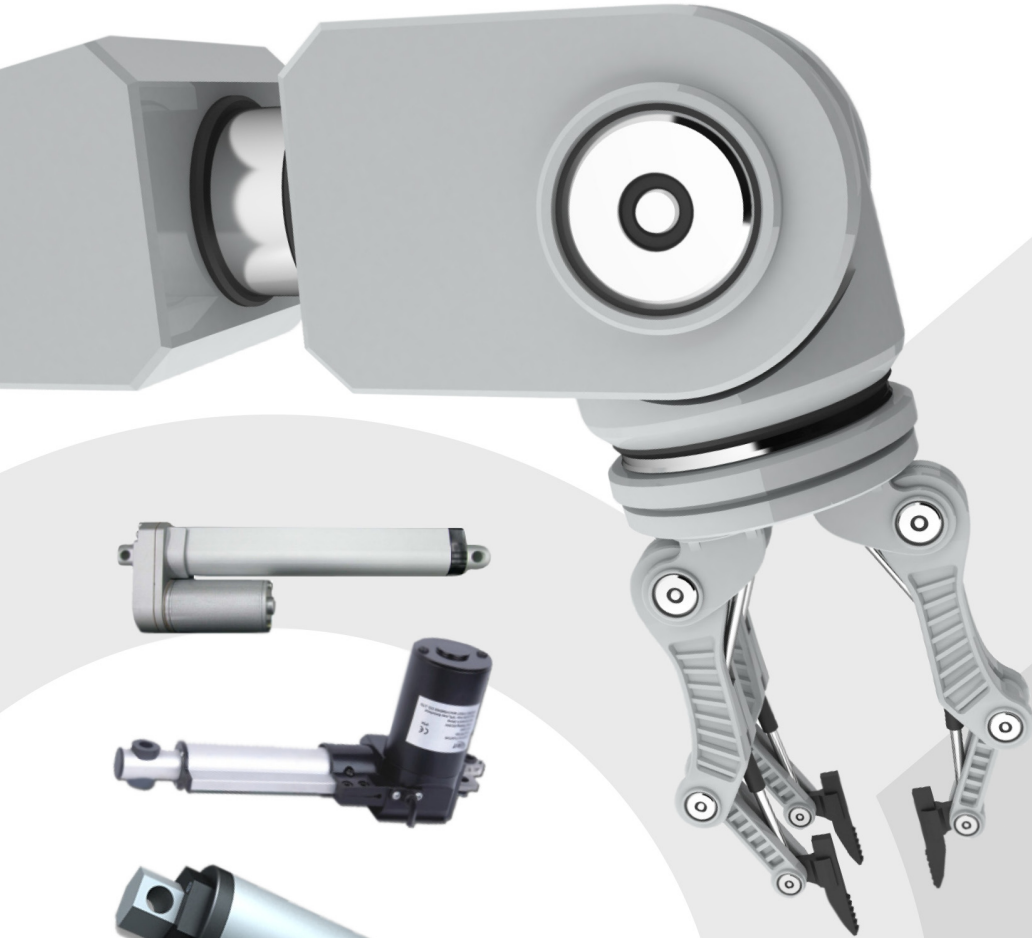
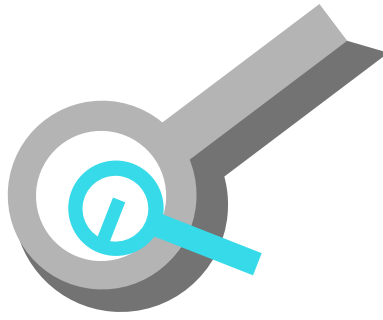


# PROGRESSIVE AUTOMATIONS



## PRODUCT CATALOGUE

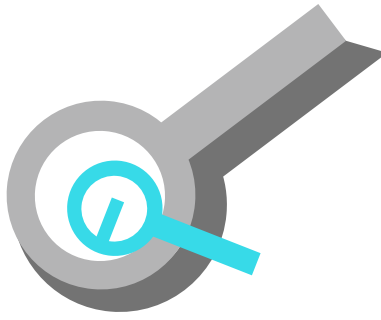
LINEAR ACTUATORS

CONTROL BOXES

MOUNTING BRACKETS

ELECTRIC MOTORS

# PROGRESSIVE AUTOMATIONS



## WHY USE THE PROGRESSIVE BRAND?

- 18 month warranty on all the products
- Same day shipping (warehouses in US & Canada)
- High quality standards & low prices
- Customization of actuators to specific needs
- Big discounts for large purchases & long-term contracts
- Engineering support to all customers
- Excellent customer service
- Advertising & network help from Progressive
- Universities and colleges receive discounts

Progressive Automations is a manufacturer and distributor in North America with warehouses located in US and Canada for quick deliveries and no cross-boarder duty taxes. Customers are able to buy actuators in any quantity desired from single unit to several thousands units. At Progressive Automations, we offer bulk discounts for larger orders, and we encourage you to inquire about quantity pricing. Buy linear actuators from Progressive Automations and experience our streamlined, convenient and comprehensive service. Our entire line of electric linear actuators comes complete with an 18 month warranty, and our customers can also benefit from our extensive catalogue of support resources. Progressive Automations makes it easy to buy linear actuators in any quantity – all of the products shown on the website are in stock, so contact us today to place your order.





**Linear Actuator  
Model: PA-02**

These actuators are small with powerful comprehensive function. They are very popular in furniture, medical equipment, consumer products, hobby design and so on.

**Stroke Size Options:**

1 to 40 inches

**Force Options:**

200 lbs; 400 lbs; 800 lbs; 1400 lbs

**Specifications:**

- Voltage: 12 or 24 VDC
- Speed (inches per second): 200 lbs (1.5"); 400 lbs (1.2"); 800 lbs (0.40"); 1400 lbs (0.25")
- Static Load: 4 x max load capacity
- Type of duty: 20%
- Operational temp: -25°C~+65°C
- Protection class: IP54
- Low noise: db<45 (A)
- Certification: CE
- Built-in limit switches, not adjustable
- Install Dimensions: Retracted 6.89 inches + stroke size

Can be used with any AC control box. See control box section on page 3.



**Mini Linear Actuator  
Model: PA-14**

These actuators are very small in size and have advantage of their size. They are suitable for almost any application and outdoor use. This model is very popular in auto, marine and consumer products.

**Stroke Size Options:**

1 to 40 inches

**Force Options:**

15 lbs; 50 lbs; 150 lbs

**Specifications:**

- Voltage: 12 or 24 VDC
- Speed (inches per second): 15 lbs (1.5"); 50 lbs (1.2"); 150 lbs (0.50")
- Type of duty: 25%
- Static Load: 4 x max load capacity
- Operational temp: -25°C~+65°C
- Protection class: IP54
- Low noise: db<45 (A)
- Certification: CE
- Built-in limit switches, not adjustable
- Install Dimensions: Retracted 4.13 inches + stroke size



**Tubular High Speed Actuator  
Model: PA-15**

These linear actuators are tubular shaped with high-speed motor. The actuators are suitable for any type of application and outdoor use where high-speed stroke is required.

**Stroke Size Options:**

1 to 24 inches

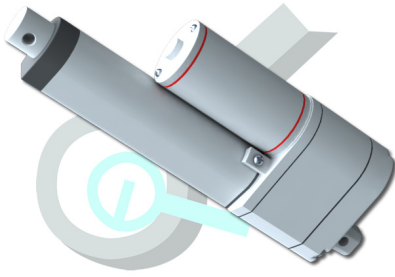
**Force Options:**

11 lbs; 22 lbs; 33 lbs; 45 lbs

**Specifications:**

- Voltage: 12 or 24 VDC
- Speed (inches per second): 11 lbs (11"); 22 lbs (9"); 33 lbs (5.5"); 45 lbs (3")
- Duty cycle: 15%
- Operational temp: -26°C~+65°C
- Protection class: IP54
- Two wire harness, reverse polarity to change direction
- Built-in limit switches, not adjustable
- Install Dimensions: Retracted 9.25 inches + stroke size





**Linear Actuator with Potentiometer**  
**Model: PA-14P**

These linear actuators are equipped with potentiometer also known as feedback actuator. They are suitable for any application that requires position control.

**Stroke Size Options:**  
1 to 40 inches  
**Force Options:**  
150 lbs

**Specifications:**

- Voltage: 12 or 24 VDC
- Speed (inches per second): 150 lbs (0.75")
- Type of duty: 25%
- Operational temp: -25°C~+65°C
- Protection class: IP54
- Low noise: db<45 (A)
- Potentiometer: 10KΩ
- Certification: CE
- Built-in limit switches, not adjustable
- Install Dimensions: Retracted 5.51 inches + stroke size



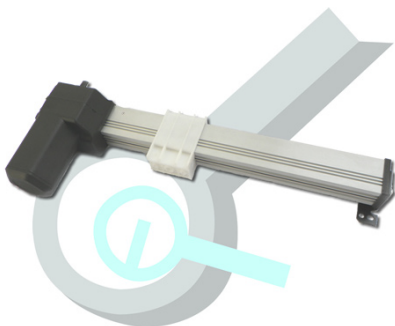
**Heavy Duty Linear Actuator**  
**Model: PA-17**

Industrial heavy-duty linear actuators are made for use with applications that require heavy lifting of items. These are very popular in commercial and industrial applications; however, they can be used in many household and hobby design applications as well.

**Stroke Size Options:**  
1 to 40 inches  
**Force Options:**  
850 lbs; 1600 lbs; 2000 lbs

**Specifications:**

- Voltage: 12 or 24 VDC
- Speed (inches per second): 850 lbs (0.59"); 1600 lbs (0.39"); 2000 lbs (0.24")
- Type of duty: 20%
- Operational temp: -25°C~+65°C
- Protection class: IP65
- Optional: Potentiometer
- Certification: CE
- Built-in limit switches, not adjustable
- Install Dimensions: Retracted 9.50 inches + stroke size



**Track Linear Actuator**  
**Model: PA-19**

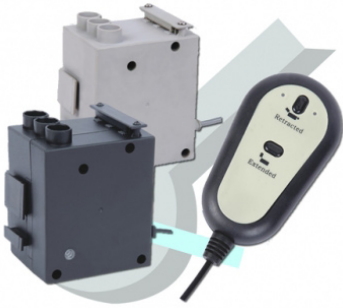
Track Actuators are suitable for almost any application and outdoor use. They are perfect to be used in furniture, hobby design and marine applications.

**Stroke Size Options:**  
1 to 40 inches  
**Force Options:**  
150 lbs; 1300 lbs

**Specifications:**

- Voltage: 12 or 24 VDC
- Speed (inches per second): 150 lbs (1.30"); 1300 lbs (0.24")
- Type of duty: 10%
- Operational temp: -5°C~+40°C
- Protection class: IP65
- Low noise level: 48dB(A)
- Certification: CE
- Built-in limit switches, not adjustable
- Install Dimensions: Retracted 7.60 inches + stroke size

Can be used with PA-26 AC control box, see page 3.



**Control Box  
Model: PA-22**

This control box can control 1 to 2 linear actuators and 1 remote control. It comes with a wired hand remote and power supply. The handset has the up/down position control.

**Specifications:**

- Input Voltage: 110 VAC or 220 VAC
- Output Voltage: 12 VDC or 24 VDC Plug; US or Europe
- Operating Type: 10%
- Max I: 2.5A
- Ambient Temperature: +5°C to +40°C
- Protection class: IP51
- Length of the Wire: 3.0 m
- Medical Certification: EN60601-1
- Color: Black
- Certification: CE
- Overload Protection Function



**Control Box  
Model: PA-24**

This control box can control 4 linear actuators and 1 remote control. It comes with a handset and power supply. The handset has the up/down position control.

**Specifications:**

- Input Voltage: 110 VAC or 220 VAC
- Output Voltage: 12VDC or 24 VDC
- Plug: US or Europe
- Operating Type: 10%
- Max I: 2.5A
- Ambient Temperature: +5°C to +40°C
- Protection class: IP51
- Length of the Wire: 3.0 m
- Medical Certification: EN60601-1
- Color: Black
- Certification: CE
- Overload Protection Function
- Has smart transformer with high power inside, low power consumption and low radiation.



**Control Box  
Model: PA-26**

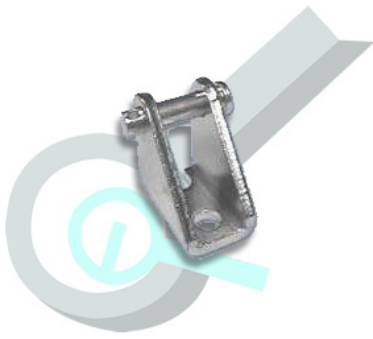
The big advantages of the control boxes are small size and simultaneous use of 2 actuators at the same time. This control box comes with an option of wireless or wired remote.

**Specifications:**

- Input Voltage: 110 to 220 VAC
- Output Voltage: 12 VDC or 24 VDC
- Plug: US or Europe
- Operating Type: 10%
- Max I: 2.5A
- Ambient Temperature: +5°C to +40°C
- Protection class: IP51
- Length of the Wire: 3.0 m
- Medical Certification: EN60601-1
- Color: Black
- Certification: CE
- Overload Protection Function
- **Hand Remote:** Wired or Wireless Option
- **Control Option:** control 2 actuators simultaneously or non-simultaneously



## CATEGORY: MOUNTING BRACKETS



### **Mounting Brackets** **Model: BRK-02 and BRK-14**

The mounting brackets are designed to make the installation of the actuators much easier and will allow the rotation of almost 180 degrees. They are designed to fit onto the both ends of the linear actuator.

### **Specifications:**

- Each bracket comes with two pins
- BRK-02 will fit the following actuator models: PA-02; PA-17; PA-19
- BRK-14 will fit the following actuator models: PA-14; PA-14P; PA-15

## CATEGORY: FOOT SWITCHES



### **Foot Switch** **Model: PDL-01 and PDL-02**

The foot remotes provide another option to control linear actuators. Foot pedals can be used with our control boxes.

## CATEGORY: ROCKER SWITCHES



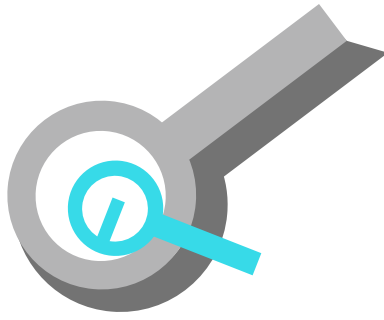
### **Rocker Switch** **Model: RC-01 and RC-03**

Rocker switches make it easy to control the actuator through a battery source. The RC-01 is the regular rocker switch and RC-03 is a momentary rocker switch.

For the wiring diagram on how to wire the actuator to the rocker switch please visit:  
[http://progressiveautomations.com/pdf/rocker\\_switch\\_wiring.pdf](http://progressiveautomations.com/pdf/rocker_switch_wiring.pdf)



# PROGRESSIVE AUTOMATIONS



## CUSTOM ORDERS

If you need to customize the actuator — no problem, we can do it! Custom order of your actuator is based on dimensions, stroke size, force and speed. The control boxes can be customized to address the voltage and plug requirements in any given country. Please allow 5 business days for the production of custom actuators and control boxes. Custom orders for single units are also available.

Need more information on custom orders, please call 1-800-676-6123.

## HOW TO ORDER

### **ON-LINE**

You can order directly from our website [www. progressiveautomations.com](http://www.progressiveautomations.com)

### **BY EMAIL**

You can order by email at [sales@progressiveautomations.com](mailto:sales@progressiveautomations.com)

### **BY PHONE**

Place an order by phone at (800) 676-6123

### **BY FAX**

Place an order by fax at (888) 812-4189, please include the shipping address, contact information and credit card information.

- Delivery takes 3-4 business days
- Custom orders take 5-6 business days

